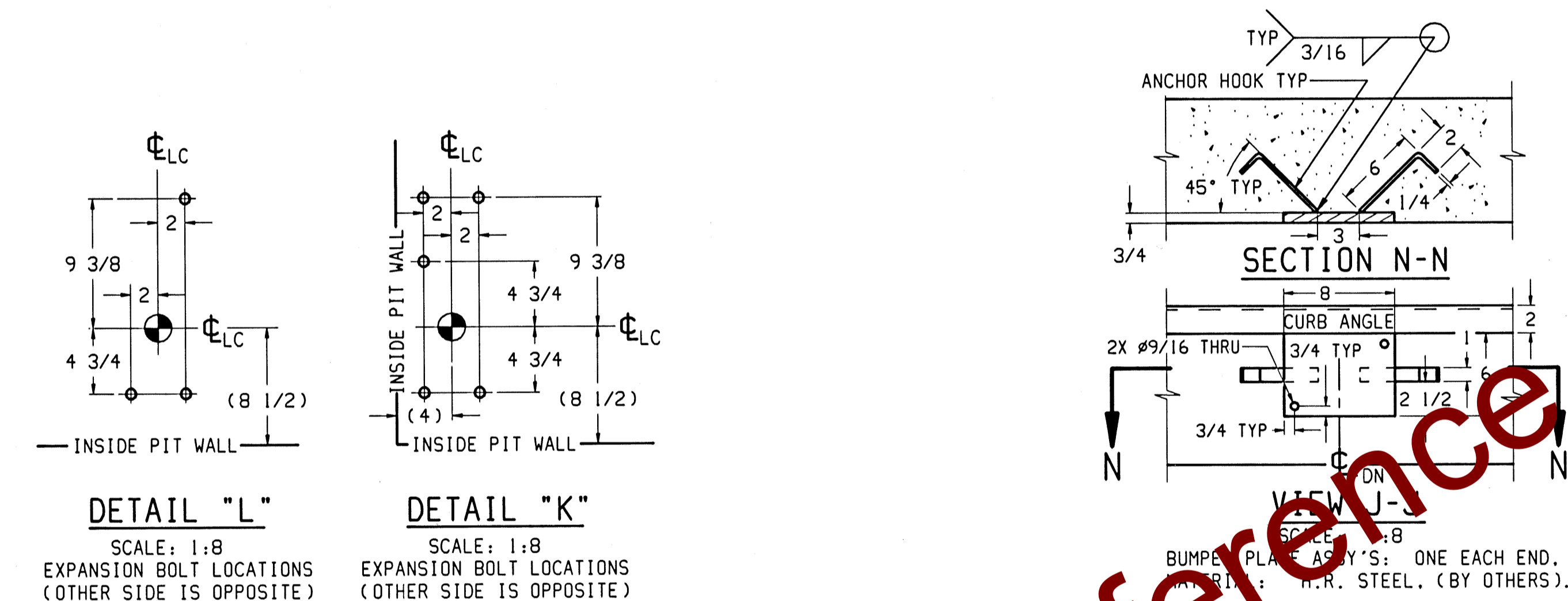


REINFORCING STEEL SCHEDULE (A.S.T.M. A-615 GRADE 60)						
COLD FORM BARS TO INSIDE DIMENSIONS						
SYM	QTY	SIZE	LOCATION, DIRECTION	A	B	WGT
COMMON TO BOTH 2' & 4'						
ST1	27	#4	FLOOR, LONG.	31'-0		559
ST2	61	#4	FLOOR, LATERAL	12'-8		516
ST3	56	#4	FOOTERS, LONG.	5'-0		187
ST4	42	#5	FOOTERS, LATERAL	12'-8		555
ST5	20	#5	APPROACH, LATERAL	10'-8		223
ST6	22	#5	END WALLS, LATERAL	9'-6		218
L1	22	#5	APPROACH TO END TIES	2'-6	2'-6	115
2' ONLY						
ST7	12	#4	SIDE WALLS, LONG.	30'-9		246
T1	36	#5	(SEE DETAIL ITEM T1)	7'-4		275
L2	204	#4	WALL TO FLOOR TIES	2'-6	3'-0	749
L3	48	#5	(SEE DETAIL ITEM T1)	1'-0	2'-0	150
L4	8	#4	(CORNERS)	2'-0	6'-10	47
4' ONLY						
ST7	24	#4	SIDE WALLS, LONG.	30'-9		493
T1	60	#5	(SEE DETAIL ITEM T1)	7'-4		459
L2	204	#4	WALL TO FLOOR TIES	2'-6	5'-0	1021
L3	48	#5	(SEE DETAIL ITEM T1)	1'-0	4'-0	250
L4	16	#4	(CORNERS)	2'-0	6'-10	94

THIS DRAWING CONTAINS INFORMATION TO BUILD EITHER A 2' OR 4' NOMINAL CLEARANCE PIT FOUNDATION. CONTRACTOR MUST KNOW DESIRED DEPTH BEFORE ORDERING MATERIALS.

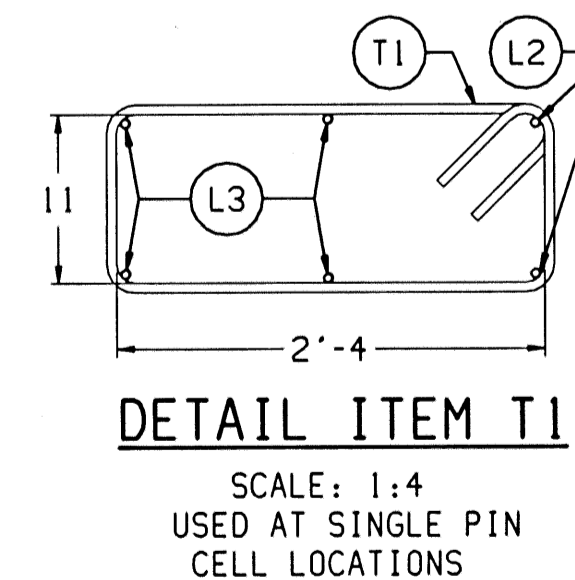


MATERIAL SUMMARY* & "Y" DIMENSION CHART		
NOMINAL CLEARANCE BETWEEN FLOOR AND SCALE	2'	4'
CONCRETE (CU. YDS.)	55	67
REINFORCING STEEL	3863	4713
Y1 (ELEVATION A-A)	2'-8 1/2	4'-8 1/2
Y2 MINIMUM (ELEVATION A-A)	4'-0	6'-0

\* QUANTITIES GIVEN ARE FOR FOUNDATION ONLY. IF CONCRETE PLATFORMS ARE USED, REFER TO GENERAL LAYOUT DRAWING FOR DECK CONCRETE AND REINFORCING STEEL QUANTITIES & SPECS.

#### NOTES:

- USE MINIMUM 3000 PSI STRENGTH CONCRETE AT 28 DAYS WITH 5-7% AIR ENTRAINMENT.
- USE MINIMUM 60KSI YIELD DEFORMED REINFORCING STEEL.
- FOUNDATION REQUIRES 2000 PSF RATED SOIL.
- TOP OF CONCRETE AT BASEPLATE LOCATIONS TO BE LEVEL AND IN ONE PLANE  $\pm 1/8"$ .
- DIAGONAL MEASUREMENTS ENDWALL TO ENDWALL MUST BE EQUAL WITHIN  $1/2"$ .
- BASEPLATE ANCHORS TO BE  $3/4"$  DIA. EXPANSION BOLTS X 6" LG. SUPPLIED BY TOLEDO. USE BASEPLATES AS TEMPLATES TO LOCATE EXPANSION BOLTS DURING SCALE INSTALLATION.
- RAMP LENGTH: -PER LOCAL REGULATIONS  
- $1/2"$  SLOPE PER FOOT TYPICAL
- BOTTOM OF FOOTERS MUST BE BELOW LOCAL FROSTLINE. IF LOCAL FROSTLINE IS UNKNOWN, REFER TO DRAWING TA201033 (U.S. WEATHER BUREAU FROST PENETRATION AVERAGES).
- CONTRACTOR SUPPLIES:
  - EXCAVATION
  - REINFORCING STEEL
  - CURB ANGLE ASSEMBLIES (SECT B-B)
  - CONCRETE AND FORMS
  - $1 1/2"$  DIA CONDUIT
  - BUMPER PLATE ASSEMBLIES (VIEWS J-J & N-N)



DETAIL ITEM T1

SCALE: 1:4  
USED AT SINGLE PIN CELL LOCATIONS

REV	CHANGE	BY	DATE	SCALE NOTED	DATE
A	REVISED REBAR SCHEDULE. INCREASED BASE SLAB	ALS	7-17-91	DATE 3/8/91	
B	CORRECT SECTION B-B. REVISED REBAR SCHEDULE	RMR	10/28/91	DRN RMR APPD	
C	ADDED 6" TO FOOTER AND CLR FOR FOOTER REBAR	ALS	6/23/93	TITLE 7560A/B FOUNDATION: PIT (2' OR 4' DP) 87'x111	
D	REMOVED NOTE #10 FROM NOTES	DGR	8/19/96		

UNLESS OTHERWISE SPECIFIED, ALL DIMENSIONS ARE IN INCHES, AND DIMENSIONAL TOLERANCES ARE:  
FRACTIONAL .XX  $\pm .02$   
DECIMAL .XXX  $\pm .005$   
ANGULAR  $\pm .5^\circ$

THIS PRINT IS FURNISHED WITH THE UNDERSTANDING THAT THE ESSENCE THEREOF WILL NOT BE REPRODUCED IN WHOLE OR IN PART WITHOUT WRITTEN AUTHORIZATION OF METTLER-TOLEDO, INC. ALL DESIGNS ARE THE PROPERTY OF METTLER-TOLEDO, INC. AND WILL BE PROTECTED BY PATENTS.

TC201576 REV D